

DCP Annual Symposium

# Clark County Multi-Species Habitat Conservation Plan Amendment

Progress Update

Rachel Perpignani

08.19.2024



# MSHCP Amendment Progress Updates

Yuma Ridgeway's Rail Permitting

Riparian Restoration Crediting Methodology

Chapter Revisions



Permitting Update

# Yuma Ridgeway's Rail

# Yuma Ridgeway's Rail



## Background.

Known in the Las Vegas Wash in the 1950's, prior to major changes to land use and habitat conditions.

Not thought to be present in Plan Area in 1990's and early 2000's during creation and planning of current MSHCP; not included as covered species, no take coverage.

## Current Status.

Rails have returned to areas with recently restored habitats - more consistent detections in recent years.

Most activities were covered under a BLM Biological Opinion, which has now expired.

We convened a group to review the potential for take and potential need for federal permits.

## Approach.

Review of potential activities:

*Maintenance and management* of habitat and infrastructure  
*Monitoring* of habitat and species

Section 10 permit routes:

Safe Harbor Agreement (SHA)      Incidental Take Permit (ITP)

Yuma Ridgeway's Rail

# Take Avoidance Measures



- Avoidance of potential habitat and 500-ft buffer in nesting season, unless surveys in that same year confirm no nesting/detections of rails
- Noise limitations if work within the 500-ft buffer must occur
- Limitations on the number of ponds or weirs (habitats) that are maintained in each year to ensure habitat is present for rails
- Avoidance measures reduce take to harassment during the non-nesting season
- USFWS was included in these discussions and concurred that a Section 10 permit is not required



Mitigation Modelling

# Riparian Restoration Crediting Methodology

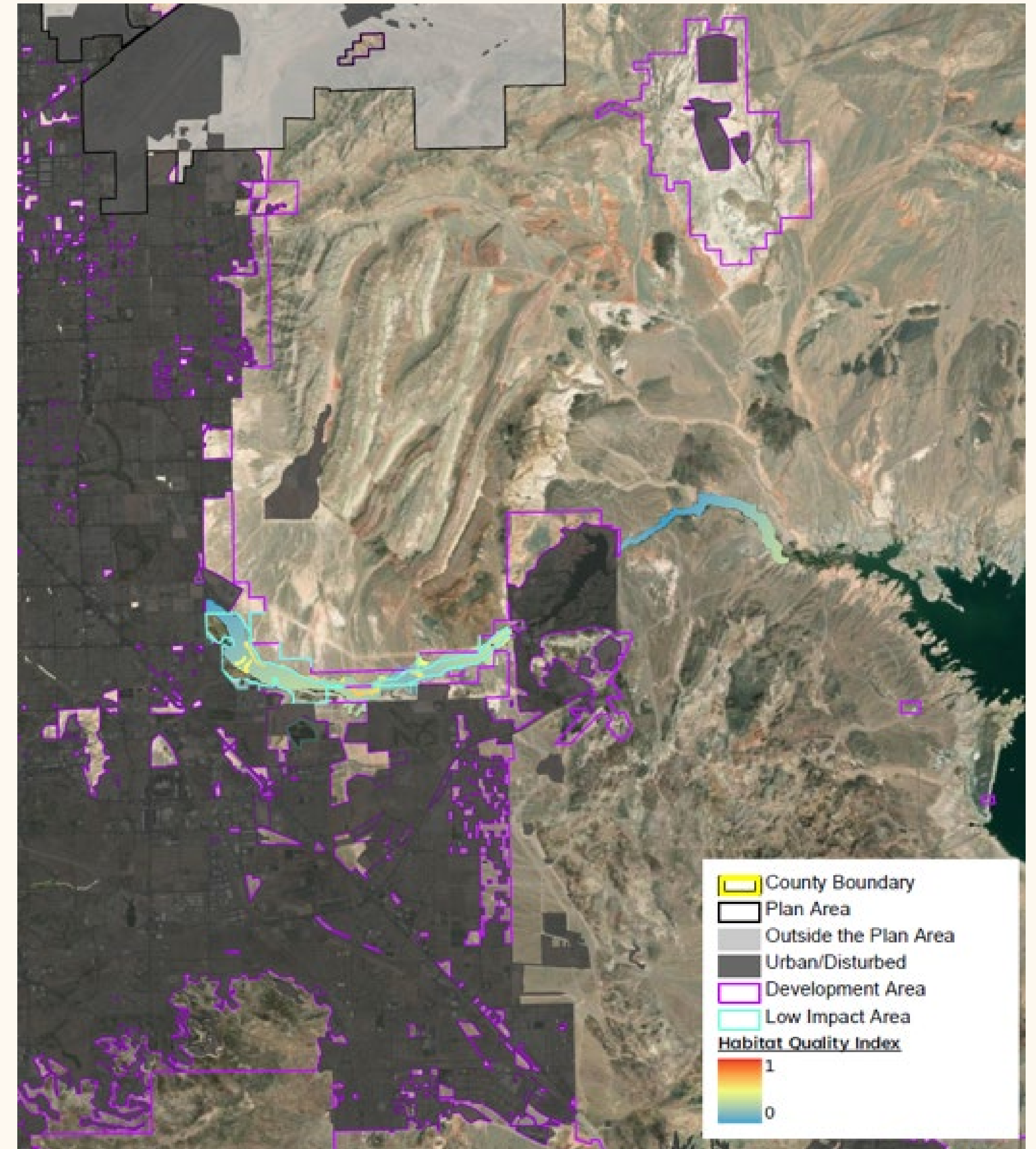
## Crediting Riparian Restoration

Acreage of riparian habitat that can be preserved to offset expected impacts of development *is limited* in Clark County.

In lieu of preservation, we can restore and/or create riparian habitat where it currently doesn't exist or where it used to exist.

Restoring riparian habitat provides more functional uplift than preservation. Functional uplift benefits riparian birds, in particular.

A crediting model quantifies improvements rendered by certain restoration actions to generate 'credits', which can be used to offset impacts.



## Target Bird Species



**Arizona Bell's Vireo**

Strong preference for nesting in willow thickets and foraging/nesting in dense, low (< 3m) vegetation.



**Southwestern Willow Flycatcher**

Requires dense riparian vegetation near surface water or saturated soil for breeding. Will nest in tamarisk.



**Western yellow-billed Cuckoo**

Breeds in low to moderate elevation native forests along rivers and streams. Requires large, contiguous patches of multilayered riparian habitat for nesting.



# Riparian Restoration Crediting Methodology

(4)

1. Stream Type	Ephemeral 0	Intermittent/Perennial 0.3	
2. Net Benefit (for each side of stream):	<20% 0.1	21-59% 0.5	>60% 1.0
3. Supplemental Buffer Credit	$\frac{(\text{Net Benefit Score (Stream Side A)} + \text{Net Benefit Score (Stream Side B)})}{2}$		
4. Grazing Restrictions Enacted	No 0	Yes 0.2	
5. Phased Invasive Removals	All in one year 0	Over 2 years 0.35	Over 3 years 0.5
6. Contiguous Riparian Habitat (minimum 10 ac. project size)	<40 acres 0	$\geq$ 40 acres 0.5	

(1)

(1) A project calculates a score for each of 6 'creditable factors'

(2) Input scores into provided spreadsheet

(3) Input acreage of project area (or sub-area)

(4) Repeat for each sub-area (if applicable)

(5) Spreadsheet auto-calculates total credits

Sub Area #	1	2	3
Sub Area Description			
1. Stream Type			
2. Net Benefit (Stream Side A)			
2. Net Benefit (Stream Side B) (if applicable)			
3. Supplemental Buffer Credit (Buffer on both sides):			
4. Grazing Restrictions Enacted			
5. Phased Invasive Removal			
6. Contiguous Riparian Habitat			
Sum of scores (M)=			
Acreage Improved (S)=			
Credits (C) = M X S			
Total Project acres	0		
Total credits from all sub areas	0		

(2)

(3)

(5)



## Creditable Factors

Six 'creditable factors' are scored in the model:

1. Stream Type
2. Net Benefit
3. Presence of Supplemental Buffer
3. Enacting of Grazing Controls
4. Phasing Removal of Invasive Plant Species
5. Contiguous Size



# Creditable Factors

## 1. Stream Type

- Intermittent and perennial stream features provide denser riparian vegetation for nesting habitat.
- Scores range from 0 (ephemeral) to 0.3 (intermittent/perennial)

## 2. Net Benefit

- Score determined by amount of area planted with riparian vegetation and treated for invasive species removal.
- Score based on %of area, ranging from 0.1 (<20%of project area) to 1.0 (>60%of project area)
- A score is assigned to each bank of a stream, if both banks are part of the project.



## Creditable Factors

### 3. Supplemental Buffer

- Protecting both sides of a creek provides contiguous nesting habitat separated by suitable foraging habitat.
- If both sides of a stream are protected, a project earns an additional 'net benefit' score.

### 4. Grazing Restrictions

- Cattle can reduce mulefat and willows density, and erode streambanks, reducing riparian quality.
- Projects restricting grazing earn a score of 0.1



## Creditable Factors

### 5. Phasing Invasives Removal

- Phasing invasive removal over several years allows the project to provide (marginal) habitat while native plants establish.
- Scores range from 0 (removed in 1 year) to 0.3 (removed over 3 years)

### 6. Contiguity

- Large, contiguous protected areas provide more benefit than isolated patches.
- Scores range from 0 (<40 acres) to 0.5 (>40 acres)



MSHCP Amendment

# Chapter Revisions



---

MSHCP Amendment

## Chapter Revisions

Chapter 4, Draft 4 - Environmental Setting

Chapter 2, Draft 3 – Project Description

Chapter 6.4, Draft 3 – Monitoring and Adaptive Management

Chapter 7, Draft 3– Changed and Unforeseen Circumstances (in progress)

Chapter 9, Draft 2 – Administration

## Upcoming

Draft CMAs

Chapter 8, Draft 2 - Funding

# Q & A



**Rachel Perpignani**  
Wildlife Biologist

[rachel.perpignani@wra-ca.com](mailto:rachel.perpignani@wra-ca.com)  
415.524.7618

**Rob Schell**  
Wildlife and Fisheries Director

[schell@wra-ca.com](mailto:schell@wra-ca.com)  
415.524.0460